

**BRUGG**

**LIFTING**

Going up.

# AUFZUGSEILE

## Anwendungshinweise

nach ISO4344, EN12385-3, DIN15020

# ELEVATOR ROPES

## Instructions for use

acc. to ISO4344, EN12385-3, DIN15020

**BRUGG LIFTING**

CH-5242 Birr

T +41 (0)56 464 42 42

[www.brugglifting.com](http://www.brugglifting.com)

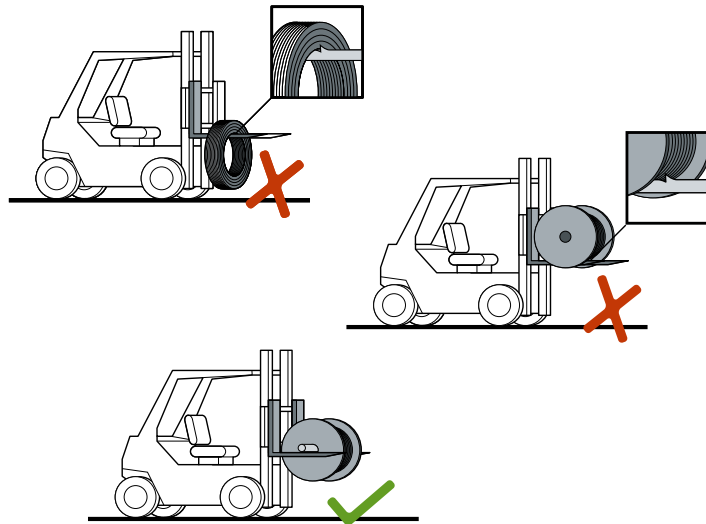
**BRUGG LIFTING**

US-Rome, GA 30162-0551

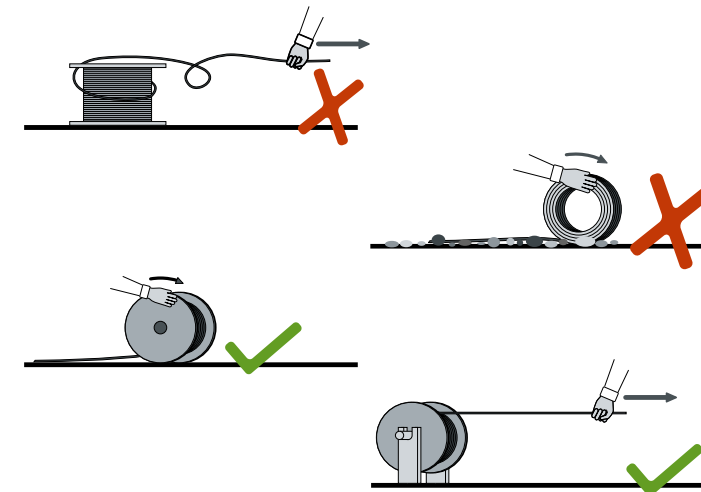
T +1 706 235 63 15

[www.brugglifting.com](http://www.brugglifting.com)

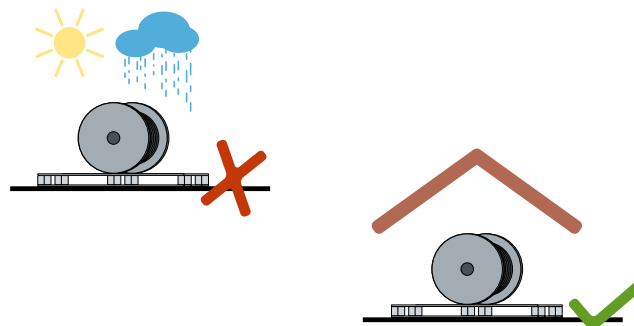
### TRANSPORT / TRANSPORTATION



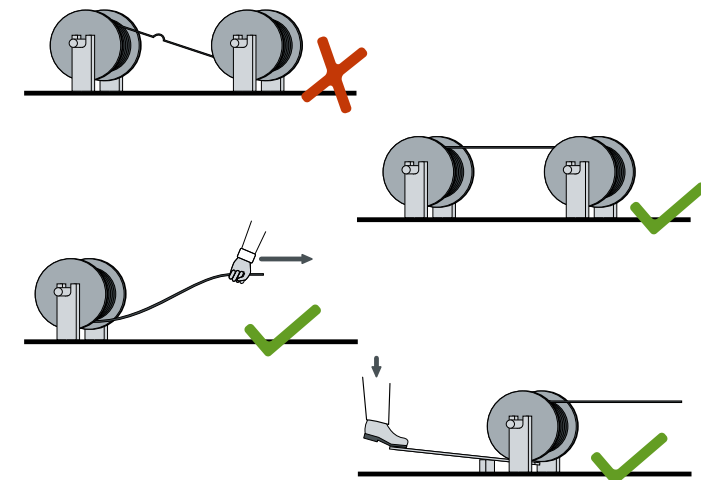
### ABROLLEN / DECOILING



### LAGERUNG / STORAGE



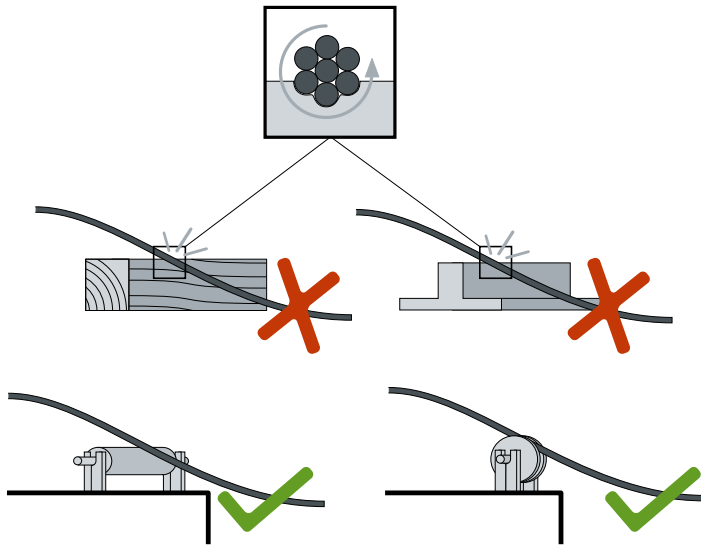
### UMSPULEN / REWINDING



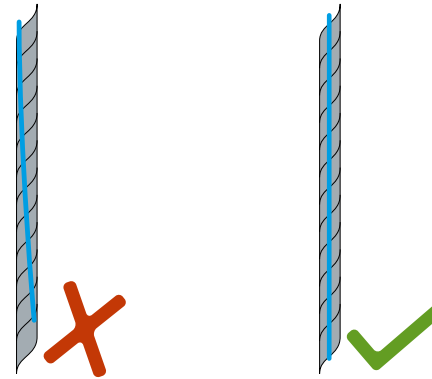
**WICHTIG**  
**IMPORTANT**



## EINZIEHEN / INSTALLATION

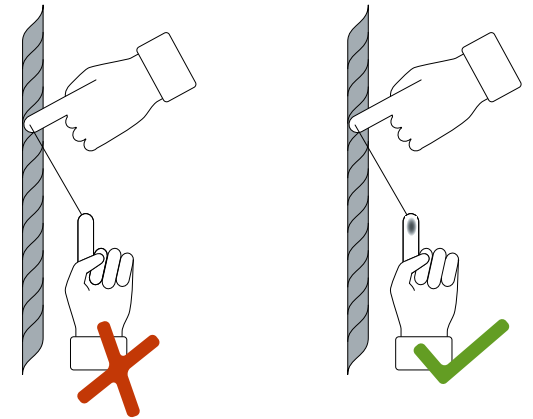


## SEILAUSRICHTUNG / ROPE ADJUSTMENT



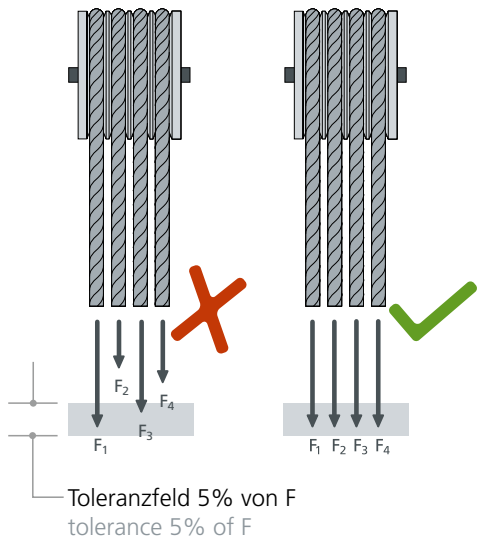
max. 1C/30m (100ft)

## NACHSCHMIERUNG / LUBRICATION

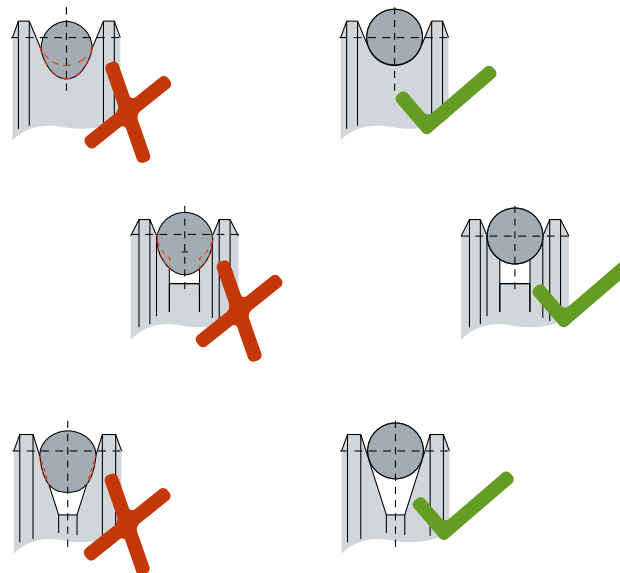


... oder alle 250.000 Fahrten oder 1x/Jahr  
 ... or every 250.000 rides or 1x p. a.

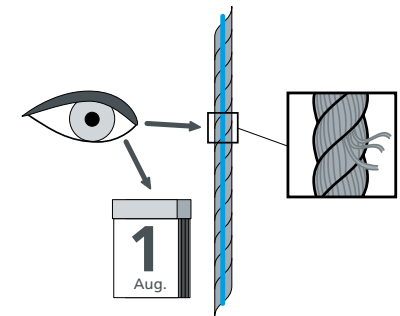
## SEILSPANNUNG / ROPE TENSION



## RILLENZUSTAND / GROOVE CONDITION



## SEILÜBERWACHUNG / DISCARD CRITERIA



### BRUGG LIFTING

Wydenstrasse 36  
 CH-5242 Birr

T +41 (0) 56 464 42 42  
 F +41 (0) 56 464 42 84  
 info.lifting@brugg.com  
 www.brugglifting.com

### BRUGG LIFTING

1801 Parrish Drive  
 P.O. Box 551  
 US-Rome, GA 30162-0551

T +1 706 235 63 15  
 F +1 706 235 60 35  
 lifting.usa@brugg.com  
 www.brugglifting.com